

■ bizhub 42/36 General Specifications

Product Name	bizhub 36/42	
Type	Desktop	
Scan Resolution	600 x 600dpi	
Print Resolution	4,800 equiv. x 600dpi (600 x 600dpi x 3 bit)	
Memory Capacity	1.5GB	
Original Type	Sheets, Books (2-page spreads), Objects (up to 3kg)	
Max. Original Size	A4 or Legal (216mm x 356mm)	
Output Size	Paper Size	Tray 2 / 3: A4, B5, A5 Bypass Tray: A4, B5, A5, B6, A6, Postcard (100mm x 148mm) Width: 90mm – 297mm, Length: 140 – 356mm
	Image Loss	Max. 4.2mm or less for top edge, Max. 3.0mm or less for bottom edge, Max. 3.0mm or less for right/left edges
Warm-Up Time (23°C, at rated voltage)	45 sec. or less (when main power on) 35 sec. or less (when starting from Sleep Mode)	
First Copy Time	8.7 sec.*1, ADF 7.9 sec.	
Continuous Copy Speed	Monoplex	42 cpm / 36 cpm (thick paper ½: 12.5 cpm)
	Duplex	42 cpm / 36 cpm
Copy Magnification	Fixed	Original Size 100.0% ± less than 0.5%
	Scaling Up	115.4%, 122.4%, 129.4%, 141.4%, 154.5%, 163.1%, 200.0%
	Scaling Down	50.0%, 60.7%, 64.7%, 70.7%, 78.5%, 81.6%, 86.6%
	Free Settings	Hand-placed copies: 25% – x400% ADF copies: 25% – x200%
Paper Capacity	Main Unit Tray: 500 sheets (80g/m ²) x 2 tiers (universal size) Note: Optional additional 2-tiered Multi Bypass: 150 sheet, 80g/m ²	
Paper Weight*2	Main Unit: 60 – 90g/m ² , Multi Bypass: 60 – 210g/m ²	
Multiple Copy	1 – 999 sheets	
Output Levels	Regular Paper	250 sheets
	Thick Paper	10 sheets
	OHP Film	1 sheet
Power Requirements	AC100V 15A (50/60Hz)	
Max. Power Consumption	1.5kW or less	
Dimensions [W] x [D] x [H]	558mm x 632mm x 807mm (ADF included)	
Max. Space Occupied [W] x [D] x [H]	1,173mm x 753mm x 1,134mm (with the FS-529 Finisher and bypass tray pulled out)	
Weight	Approx. 63kg	

*1: A4 crosswise, when scanned from platen glass, in magnification, or from main unit tray.

*2: Depending on print environment, print quality may be affected.

■ ADF Specifications (Standard)

Document Feeding Type	Automatic Duplexing Document Feeder	
Document	Monoplex	Regular Paper (50 – 128g/m ²)
Types	Duplex / Mixed	Regular Paper (50 – 128g/m ²)
Document	Monoplex / Duplex	A4 or Legal (216mm x 356mm) [Max. 1,000mm in Fax Mode]
Size	Mixed	Mixed with legal size only
Document Stacking Capacity	Monoplex/Duplex: Max. 50 sheets or less (80g/m ²)	
Document Exchange Speed	30 sheets (A4), 31 sheets (letter)	
Power Requirements	Shared with main unit	

■ Printer Specifications (Standard)

Type	Embedded	
Print Speed	Shared with main unit	
Resolution	4,800 equiv. x 600dpi (600 x 600dpi x 3 bit)	
Memory Capacity	1.5GB	
PDL	PostScript 3 compatible (3016), PCL6 (XL3.0), PCL5e/c, PDF1.7/JPEG/TIFF/XPS1.0 Direct print	
Internal	PCL	80 European fonts
Fonts	PS	137 European Type1 fonts
Protocol	TCP/IP, IPX/SPX (NDS compatible), SMB (NetBEUI), UDP, AppleTalk	
Supported OS	PCL	Windows XP / XP x64 / Vista / Vista x64 / 7 / 7 x64 / Server2003 / Server 2003 x64 / Server2008 / Server2008 x64 / Server 2008 R2
	PS	Windows XP / XP x64 / Vista / Vista x64 / 7 / 7 x64 / Server2003 / Server 2003 x64 / Server2008 / Server2008 x64 / Server 2008 R2
	XPS	Mac OS (10.2.8, 10.3.9, 10.4, 10.5, 10.6) [Includes Intel Macs] Windows Vista / Vista x64 / 7 / 7 x64 / Server2008 / Server2008 x64 / Server 2008 R2
Interface	Ethernet (1000Base-T/100Base-TX/10Base-T) USB 2.0	

For more detailed information,
please visit the bizhub Website at

<http://www.bizhub42.com>

Product appearance, configuration and/or specifications
are subject to change without notice.

KONICA MINOLTA, the KONICA MINOLTA logo and symbol mark,
and "The essentials of imaging" are registered trademarks or
trademarks of KONICA MINOLTA HOLDINGS, INC.
bizhub, bizhub PRO, bizhub PRESS, Magicolor, PagePro,
PageScope, Simitri, Simitri HD, Simitri HD+, Simitri with Biomass,
Emperon, S.E.A.D., S.E.A.D.II, Printgroove and Konica Minolta
Optimised Print Services and their respective logos are registered
trademarks or trademarks of KONICA MINOLTA BUSINESS
TECHNOLOGIES, INC.

All other brands and product names are registered trademarks or
trademarks of their respective companies or organisations.



Ecology & Environment

KONICA MINOLTA products are designed with the environment in mind.

- Energy Star
- Eco-friendly Toners
- RoHS Compliance
- Production at ISO Certified Factories
- WEEE Compliance



From consulting, system design, to operations, Konica Minolta offers
total support to optimise your office output environment.

<http://www.biz.konicaminolta.com/services/ops>

⚠ Requirements for safe use

- Please read and follow the instruction manual to ensure safe operation.
- Only operate using appropriate power supply and voltage.
- Connecting the earth wire to an inappropriate place may cause explosion or electric shock. Please connect accordingly (Taiwan and the Philippines only).

**KONICA MINOLTA
BUSINESS TECHNOLOGIES, INC.**

1-6-1 Marunouchi Chiyoda-ku, Tokyo, Japan
<http://www.biz.konicaminolta.com>

9251-3200-01 Printed in Japan

■ Scanning Function Specifications (Standard)

Type	Full-Colour Scanner
Scanning Size	Max. A4 or Legal
Scanning Resolution	150/200/300/600dpi
Scanning Speed	30spm (A4, 300dpi), 31spm (letter, 300dpi)
Interface	Ethernet (1000Base-T/100Base-TX/10Base-T)
Protocol	TCP/IP (FTP, SMB, SMTP, WebDAV, WSD-Scan)
Output Format	TIFF, PDF, Compact PDF, JPEG, XPS

■ Fax Specifications (Optional)

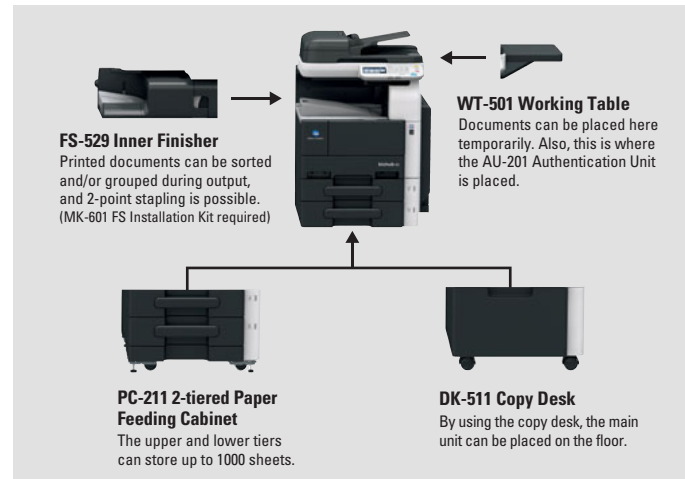
Communication	ECM / Super G3
Compatible Lines	Subscription phone line (PSTN), PBX
Sending Resolution	Standard: 200 x 100dpi (8dot/mm x 3.85line/mm) Fine: 200 x 200dpi (8dot/mm x 7.7line/mm) Super Fine: 400x400dpi (16dot/mm x 15.4line/mm) Sending resolution depends on the capabilities of the recipient's fax device.
Sending Speed	2.4kbps – 33.6kbps
Compression	MH, MR, MMR, JBIG
Sending Paper Size	Platen Glass: Max. A4, Legal ADF: 215.9mm x 1,000mm
Recording Paper Size	Max. A4, Legal Documents exceeding 1,000mm cannot be received. Following page division settings, recorded documents up to 1,000mm are recorded.
Sending Speed	3 pages / sec.
Abbr. Dials	2,000 (max. number of recipient contacts)
Programme Dials	400 (max. number of programme registrants)
Group Registration	100 (max. number of group registrants)
Simultaneous Recipients	Max. 500

Note: Times based on A4 document containing 700 characters (standard internal testing document), sent in standard resolution in Super G3 (ITU-T v.34 std., 336kbps or higher) using JBIG compression.

■ Internet Fax Function Specifications (Optional)

Protocol	Internet Fax (simple mode9, TCP/IP, SMTP, POP3)
Sending Paper Size	A4
Resolution	Sending Standard: 200 x 100dpi Fine: 200 x 200dpi
	Receiving 200 x 100dpi, 204 x 98dpi (80 x 38.5dot/cm) 200 x 200dpi, 204 x 196dpi (80 x 377dot/cm) 200 x 300dpi 200 x 400dpi, 204 x 391dpi (80 x 154dot/cm) 400 x 100dpi, 408 x 391dpi (160 x 154dot/cm)
Data Format	Monochrome TIFF
Registered Recipients	Max. 2,000
Simultaneous Recipients	Max. 500
Data Compression Formats	Sending: TIFF-S (MH), Receiving: TIFF-S (MH), TIFF-F (MR/MMR)

■ System Configurations



KONICA MINOLTA

MINIMISE ALL. MAXIMISE ALL.

bizhub 42/36



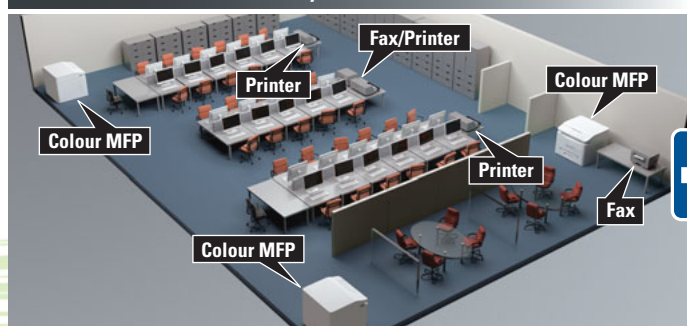
Giving Shape to Ideas

Optimise Workflow, Boost Productivity, Cut Costs. It's That Simple.

Businesses already face enough challenges, so why should document output be one of them? Optimised Print Services (OPS) from Konica Minolta makes it simple, and the bizhub 42/36 is a key to making it happen. The bizhub 42/36 integrates into your existing MFP infrastructure, delivering a smart A4 monochrome output solution that saves money by reducing unnecessary colour output, minimising cost per print and conserving energy. Boasting reliable performance and a slim design, the bizhub 42/36 packs high image quality, ease-of-use and high functionality into a small package.

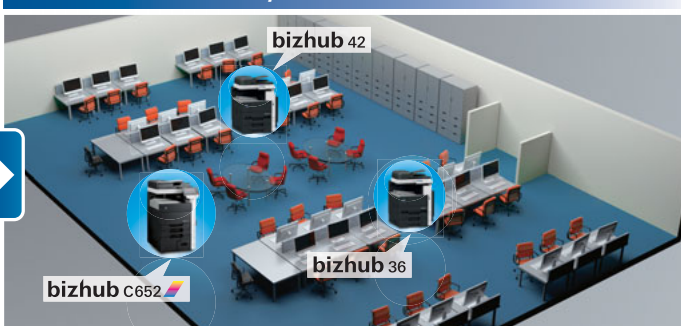
KONICA MINOLTA
OPTIMISED PRINT SERVICES™
From consulting, system design, to operations, Konica Minolta offers total support to optimise your office output environment.
<http://www.biz.konicaminolta.com/services/ops>

Office Without bizhub 42/36



Management is difficult and cost performance is not optimised.

Office With bizhub 42/36



Monochrome printing levels increase, leading to lower costs.

Key Points

- 1 Reduced TCO**
The bizhub 42/36 keeps costs low without sacrificing performance.
- 2 High Performance & Expandability**
Exceptional print quality, colour scanning and more!
- 3 Usability & Ecological Thinking**
Easy for everyone to use and easy on the environment.

bizhub 42/36
The Slim MFP that Grows with Your Business

small biz
A4 MFP



- bizhub 42 B&W A4 Copy/Print 42 ppm
- bizhub 36 B&W A4 Copy/Print 36 ppm
- Colour Scan (Standard)
- Duplex (Standard)
- Fax (Option)
- IC-Card Authentication (Option)
- Smitri HD Toner
- Bioplastic
- Emperon Driven!

Key Point 1

Reduced TCO

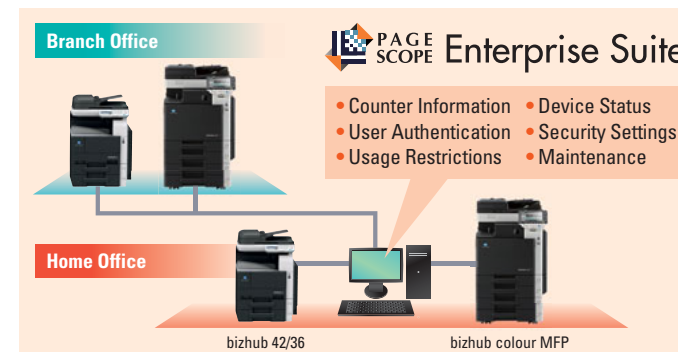
Keeping costs low is a top priority for every business. The bizhub 42/36 offers a comprehensive approach to cutting TCO, while Konica Minolta's PageScope Enterprise Suite (PSES) software streamlines management of all bizhub devices, reducing man hours and increasing efficiency.

> Monochrome Printing Helps Cut Costs

When printing documents for internal checks and meetings, monochrome is all you need. By effectively dividing output duties between the bizhub 42/36 and A3 colour MFPs on your network, your office can achieve optimised document workflow.

> Consolidated Management with Colour MFPs

Managing all of the MFPs on your network can be a challenge. But with Konica Minolta's PageScope Enterprise Suite (PSES), administrators can manage device status, set usage restrictions, aggregate user data and much more all at once.



Key Point 2

High Performance & Expandability

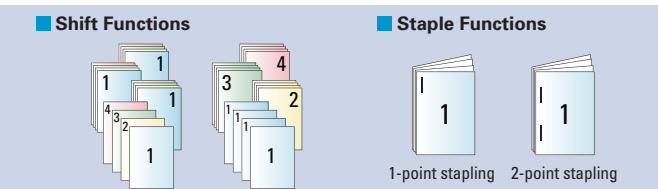
Monochrome output doesn't have to mean inferior quality. The bizhub 42/36 is equipped with the same advanced image processing engine used in higher speed models. What's more, an optional inner finisher and paper tray make this the monochrome MFP that grows along with your business.



FS-529 Inner Finisher



PC-211 2-tiered Paper Feeding Cabinet



> Exceptional Image Quality

Konica Minolta's exclusive Smitri HD toner offers high-definition reproduction of small characters and images, ensuring high-quality output of all business documents. The bizhub 42/36 also allows colour scanning for added business value.

> Expanded Possibilities

A compact inner finisher with advanced functionality can be slotted into the main unit to provide shift functions and 2-point stapling. And for offices with high print volumes, two 500-sheet capacity paper trays can be added, expanding total capacity to 2,150 sheets – enough for even large print runs.

Key Point 3

Usability & Ecological Thinking

Konica Minolta takes a holistic approach to the environment, introducing technologies to protect the earth and make the office environment as pleasant as possible. As a class-leader in energy conservation and noise reduction measures, the bizhub 42/36 is an embodiment of Konica Minolta's unique approach.

> Universal Design Gives Equal Access to All Users

From the tilting colour LCD control panel to the easy-open paper trays, universal design is apparent throughout the bizhub 42/36. But it doesn't stop there; measures to reduce noise both during operation and standby contribute to a more comfortable work environment.

> Caring for the Planet

With the bizhub 42/36 in your office, you'll be doing your part for the planet. Biomass plastics used on the toner supply instruction label ensure a smaller environmental footprint right from the production stage, while low power consumption levels that easily clear international Energy Star standards help you save resources and money.



The tilting control panel featuring an easy-to-read colour LCD.